

Lynar

It's your move



FEEL GOOD

ESPRESSO.....
AMERICANO.....
LATTE.....
FLAT WHITE.....
CAPPUCCINO.....
MATCHA.....
MATCHA CHAI.....



SELF CHECK IN



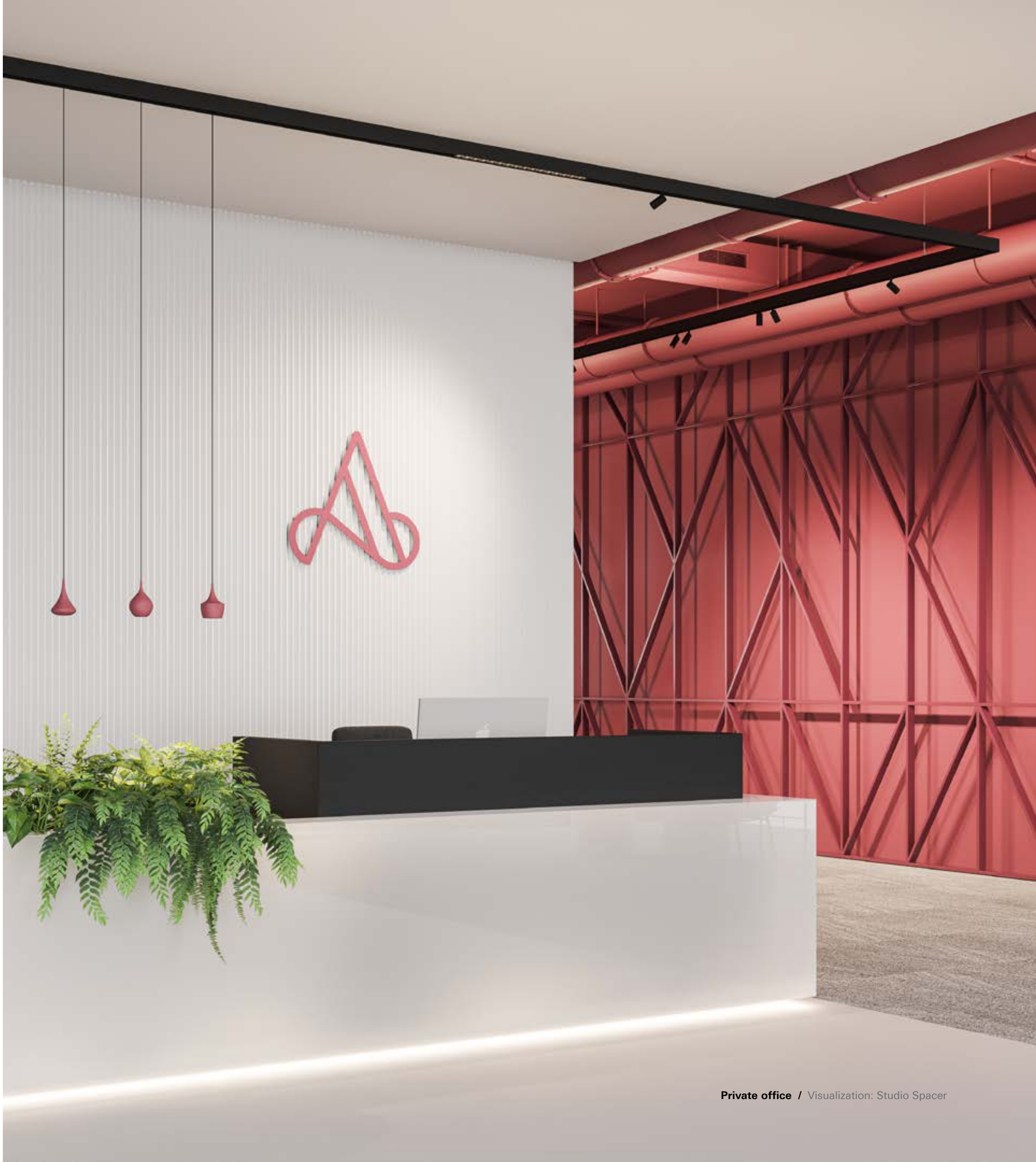
Private office / Architecture: AKSL arhitekti / Visualization: Studio Spacer



Private office / Visualization: Studio Spacer

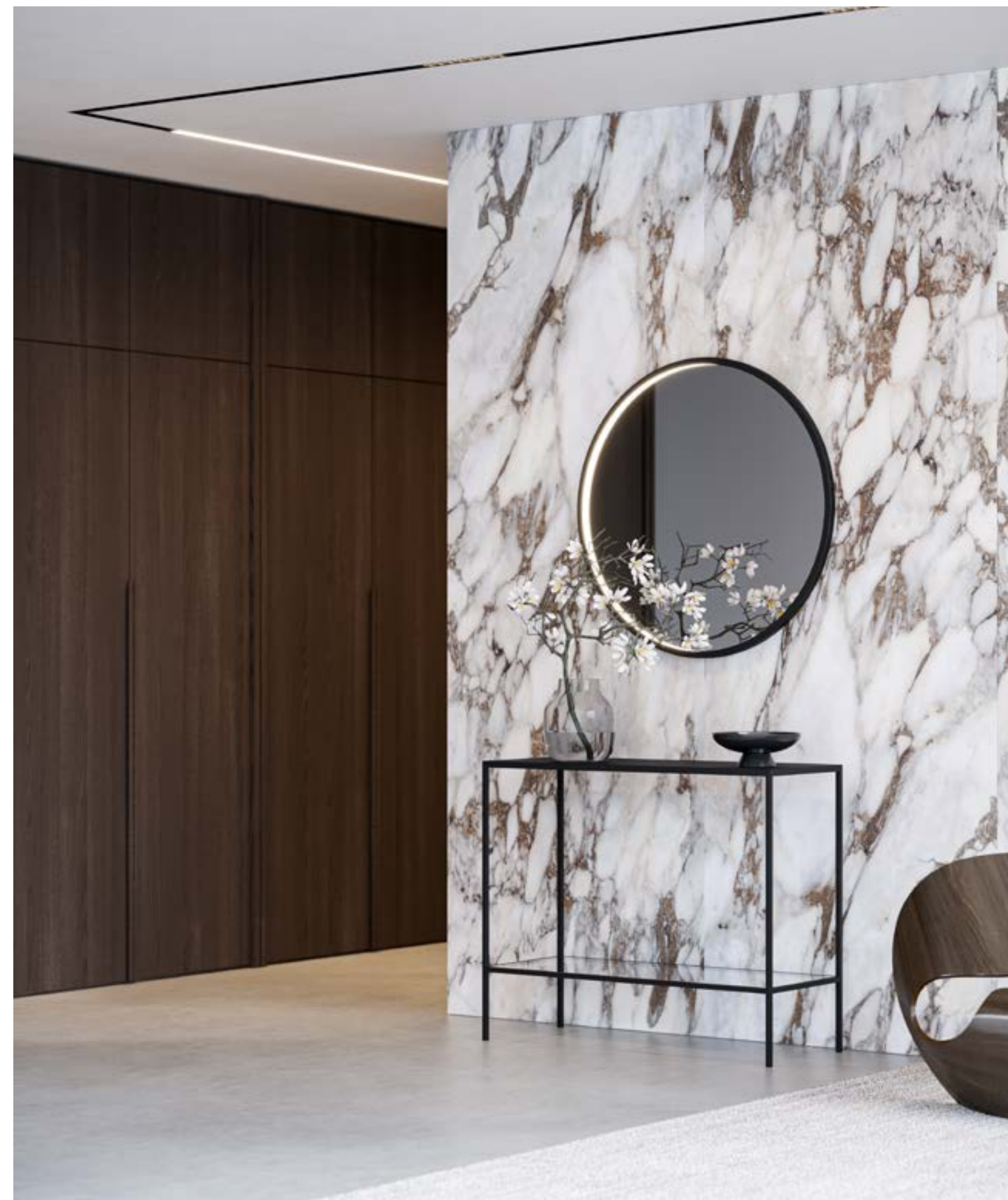


Private office / Visualization: Studio Spacer



Private office / Visualization: Studio Spacer





Private residence / Visualization: Studio Spacer



Sweet home for light modules

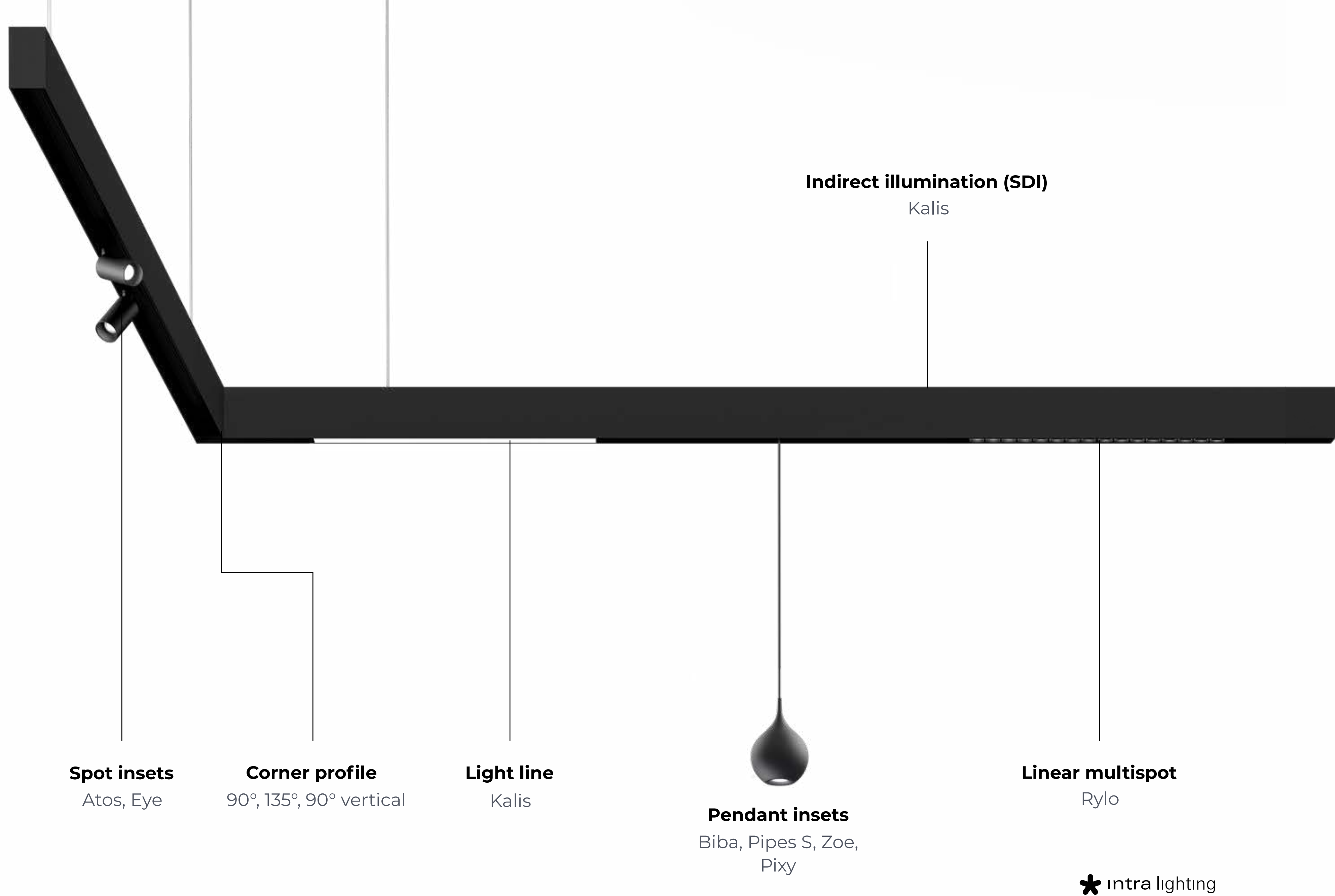
Lynar is an elegant, endless modular profile that offers maximum flexibility.

The choice of modules is wide and the installation is tool-free, simple, fast and safe. Combine them the way you want and change or move at anytime.

It covers a wide range of use - from office, galleries, retail, hospitality to private residences.



Lynar insets



Family range

RI

Recessed
invisible

RV

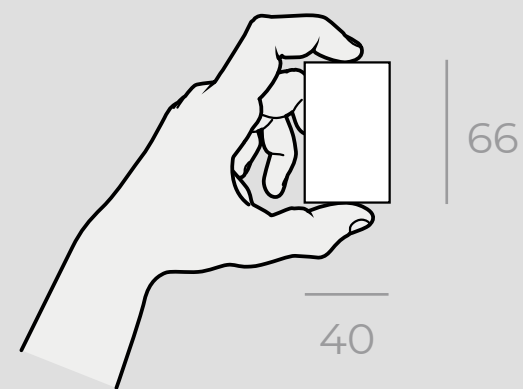
Recessed
visible

C/S

Ceiling or
suspended

SDI

Suspended
direct and indirect



PROFILE LENGTH:

500 - 3000 mm

MODULE TYPE:

Linear, Corner

ELECTRICAL CONNECTION:

48Vdc (not included, order separately)

* intra light

Pendant insets

LED COLOR

830, 840, 927, 930, 935, 940

DRIVER

DALI

117

75

Biba LYN

Up to 936 lm, 8W

300

Ø45

Pipes 45 S LYN

Up to 1300 lm, 12W

154

123

Pixy LYN

Up to 1532 lm, 16W

360°

+/-90°

228 - 344

Zoe LYN

Up to 1481 lm, 12W

Ø86 - Ø210

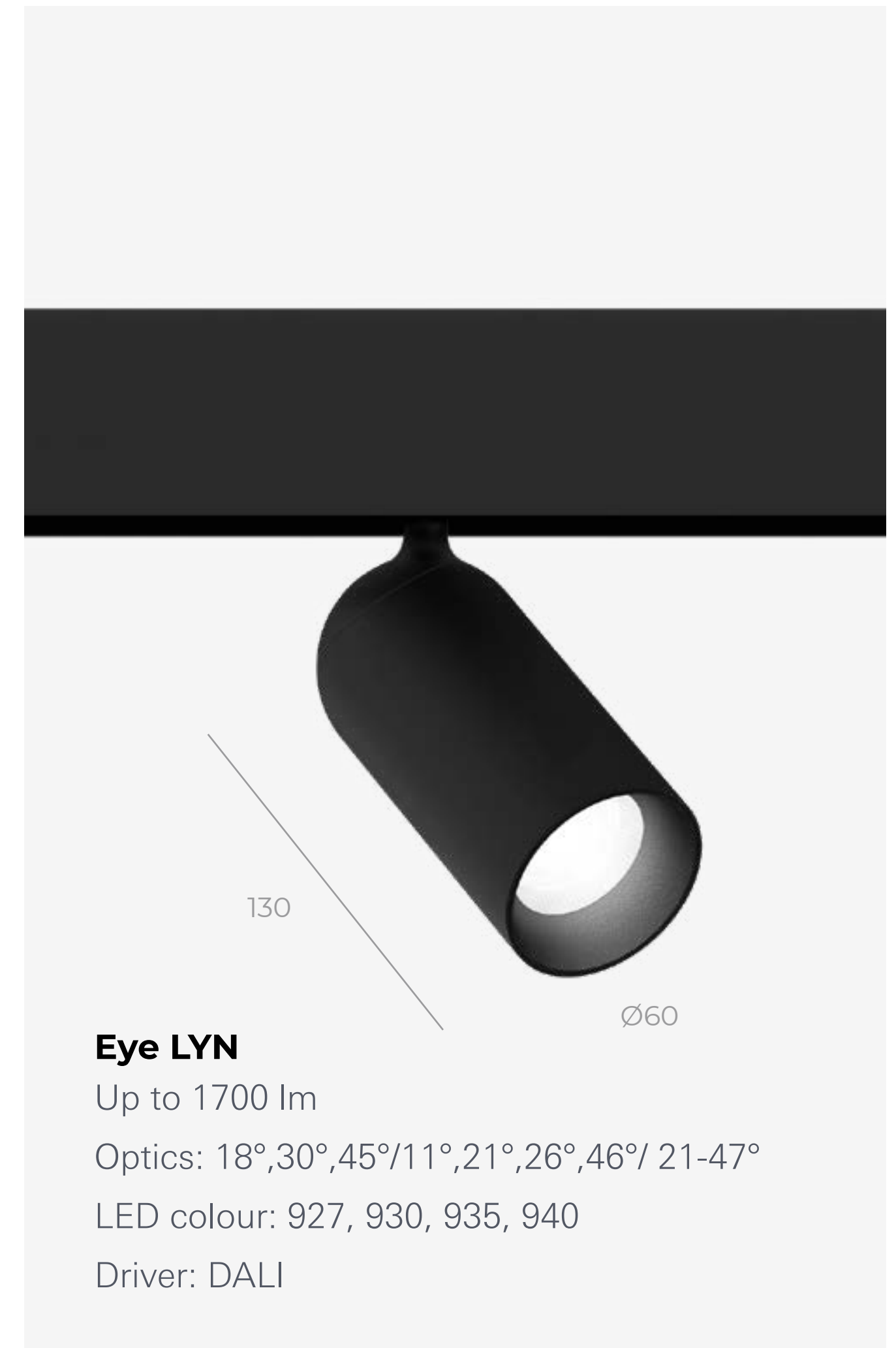
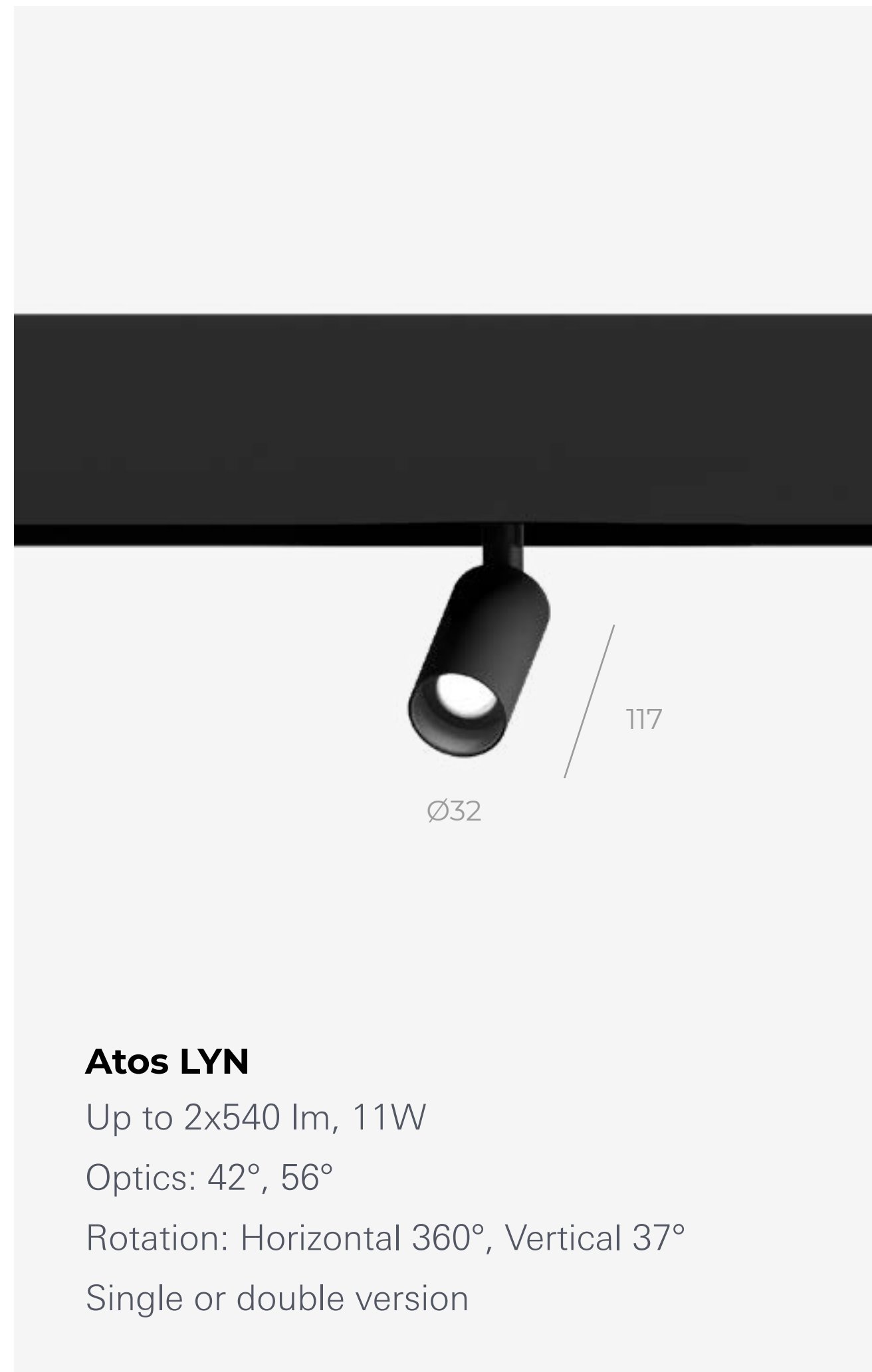
Spot insets

LED COLOR

830, 840, 927, 930, 935, 940

DRIVER

DALI



Light line

MODULE LENGHT

285 mm - 1405 mm

LUMINAIRE LUMINOUS FLUX

up to 1600 lm

OPTICS

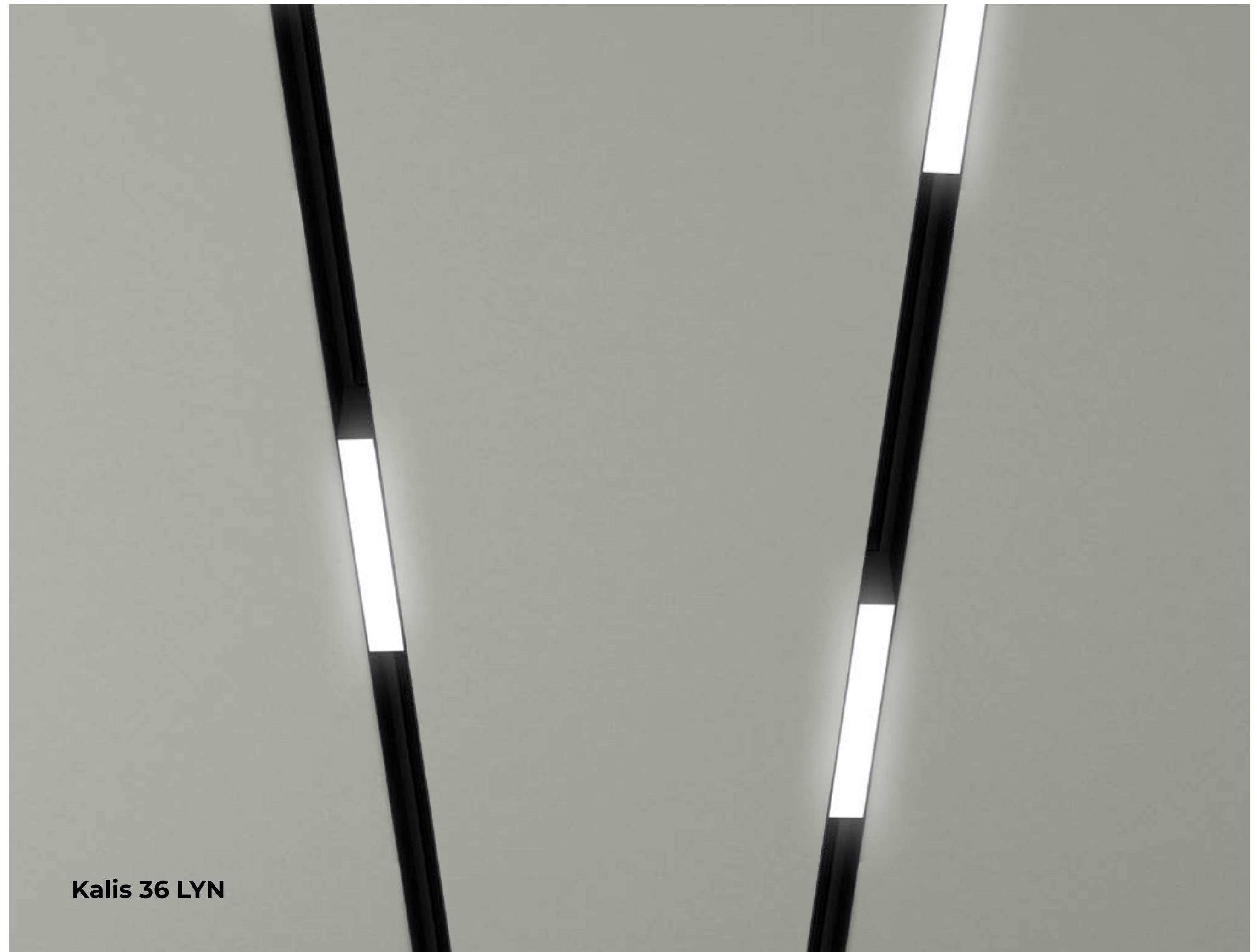
SOP, DPR

DRIVER

DALI

LED COLOR

827, 830, 840, 930, 940

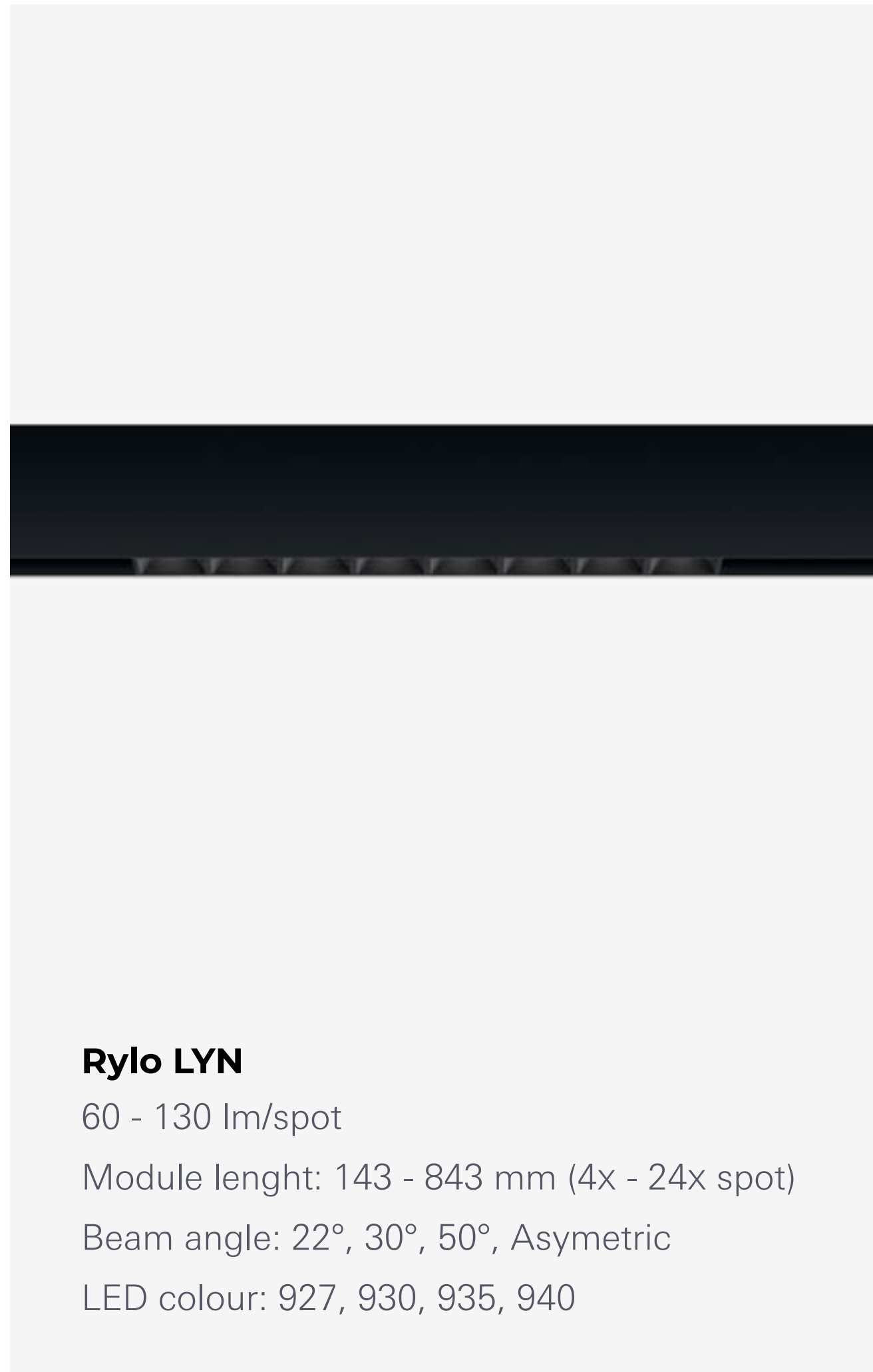


Kalis 36 LYN

Multispot

DRIVER

DALI



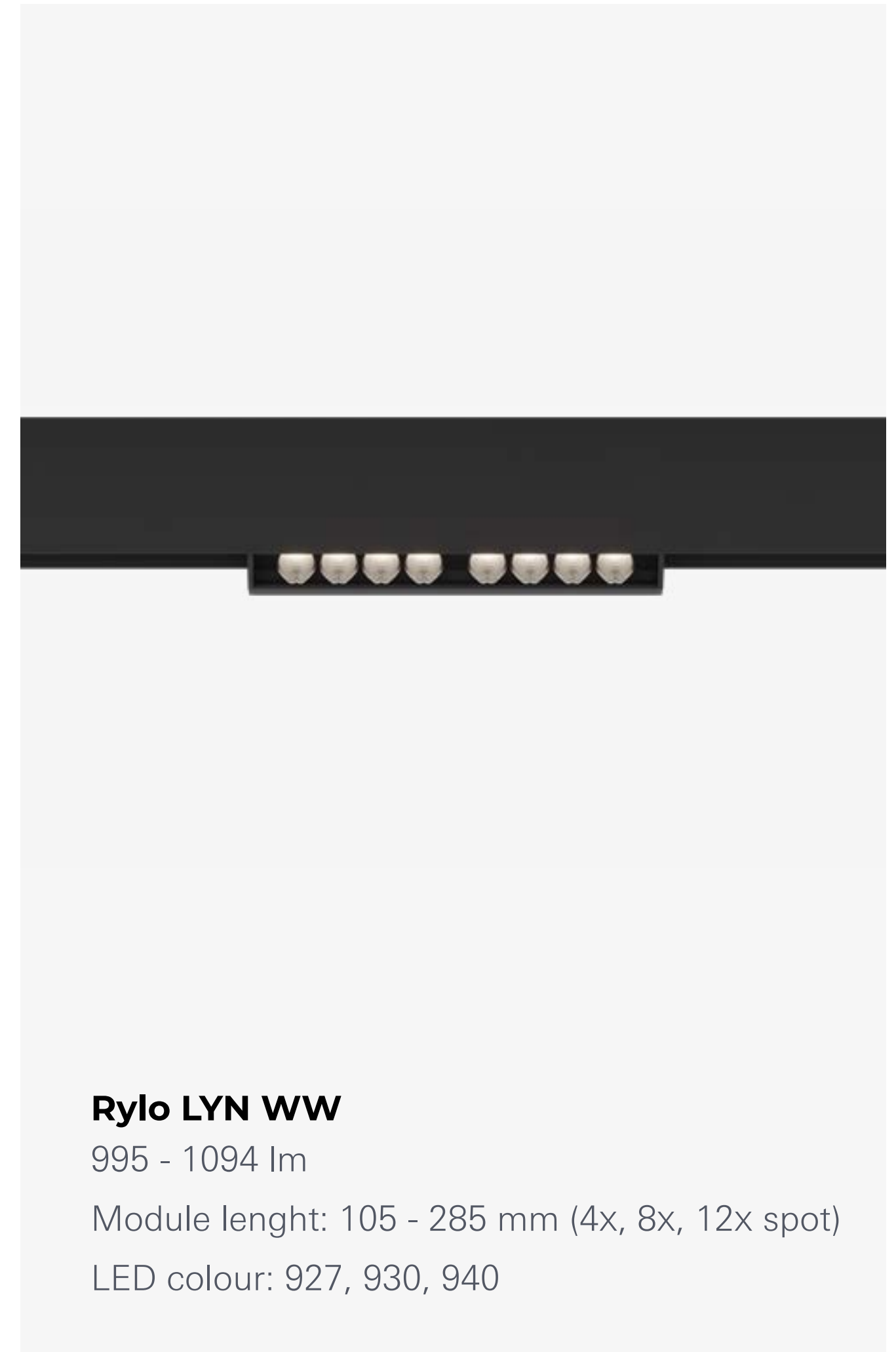
Rylo LYN

60 - 130 lm/spot

Module length: 143 - 843 mm (4x - 24x spot)

Beam angle: 22°, 30°, 50°, Asymmetric

LED colour: 927, 930, 935, 940



Rylo LYN WW

995 - 1094 lm

Module length: 105 - 285 mm (4x, 8x, 12x spot)

LED colour: 927, 930, 940

Indirect illumination

LUMINAIRE LUMINOUS FLUX

990 lm/m, 8W

OPTICS

SOP

DRIVER

DALI

LED COLOR

827, 830, 840, 930, 940



Choose your colour

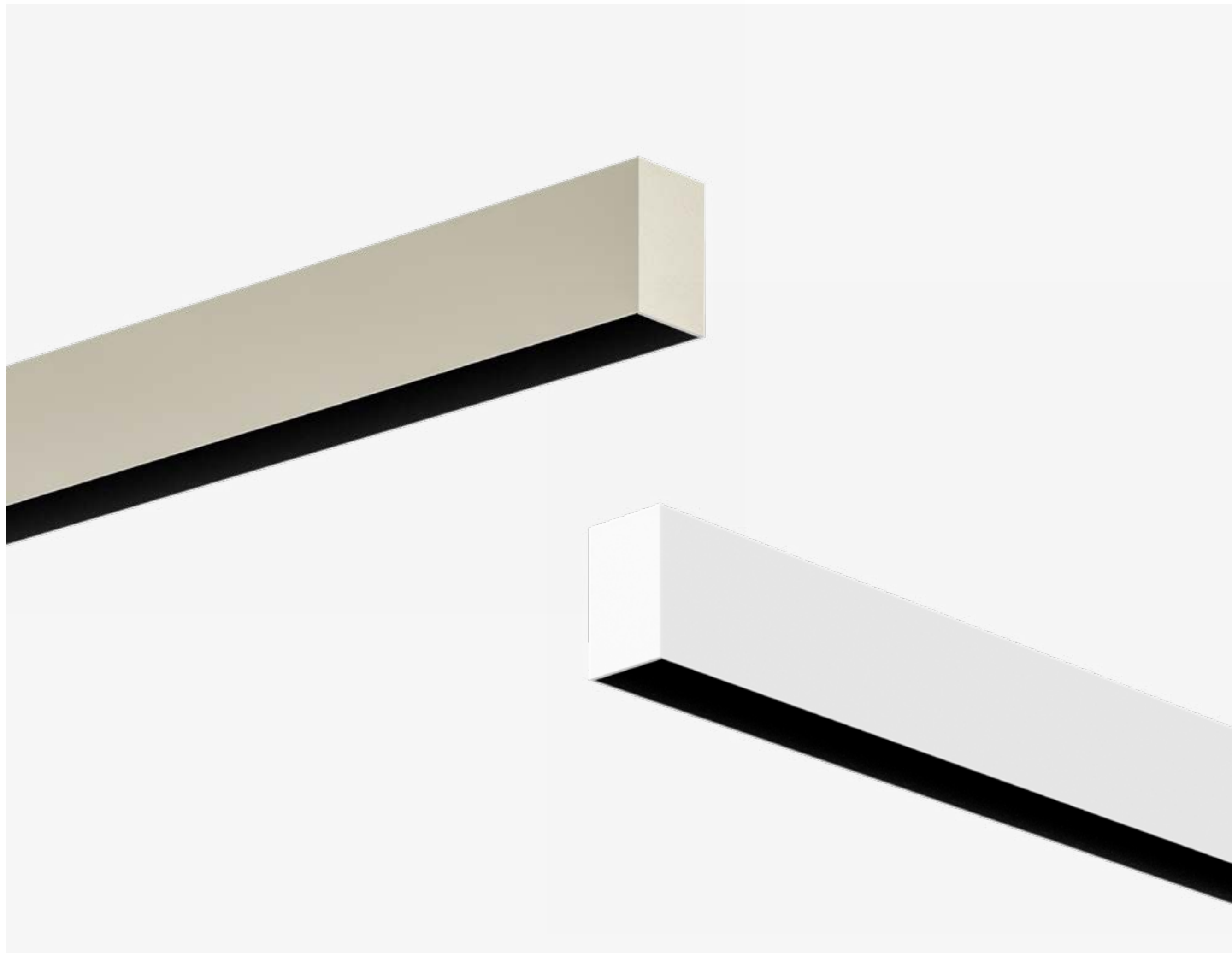
The inlay colour is always black, whereas the housing and the insets are available in different colours. Choose the one you prefer.

Housing color



*RI and RV options are only available in black.

Inlay color



Tool-free installation

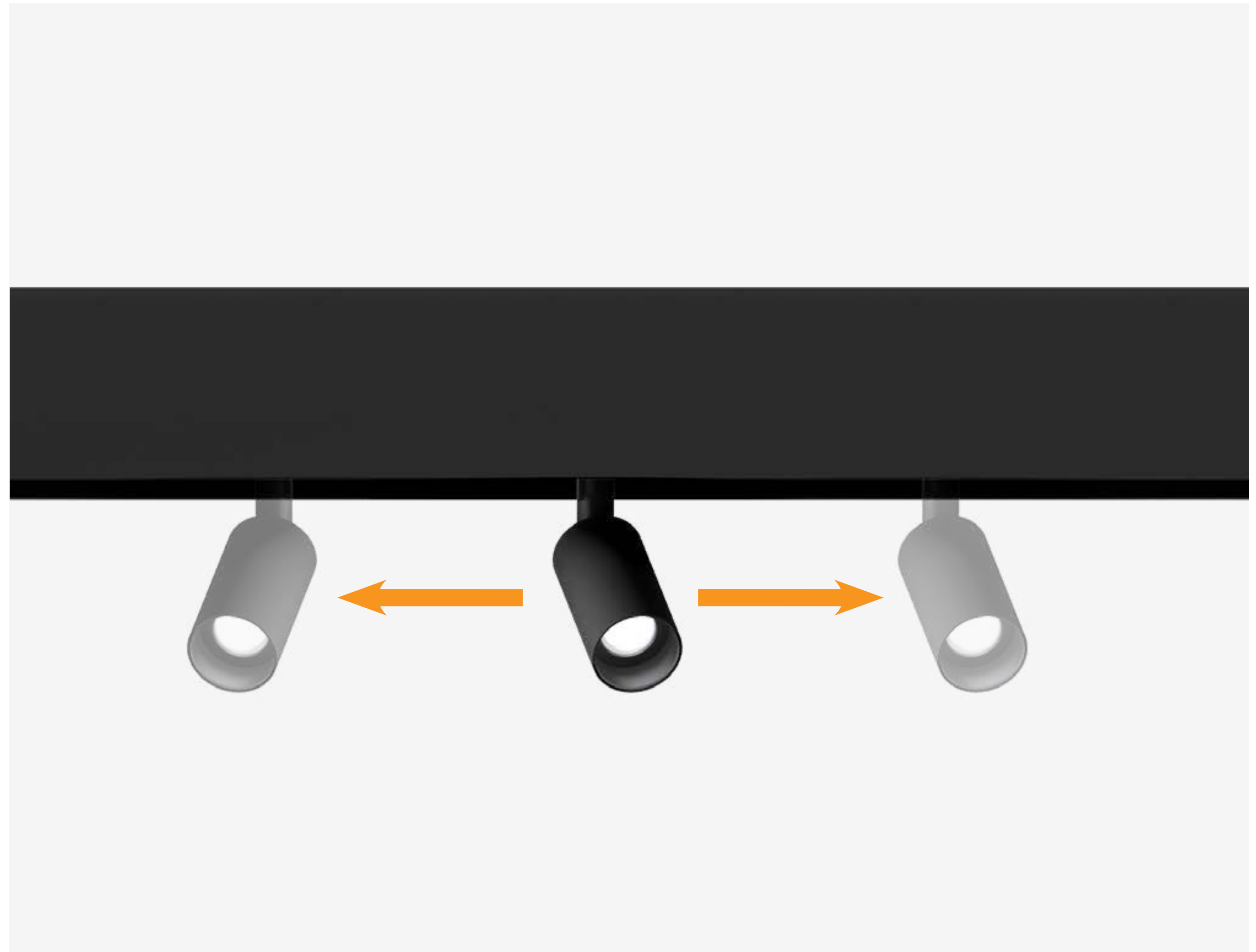
The installation or repositioning of modules is simple, fast and safe. The products are fixed with a mechanical coupling that ensures a reliable and lifelong grip.

The connection between the profiles is seamless, so you can create endless compositions with no visible join effects.

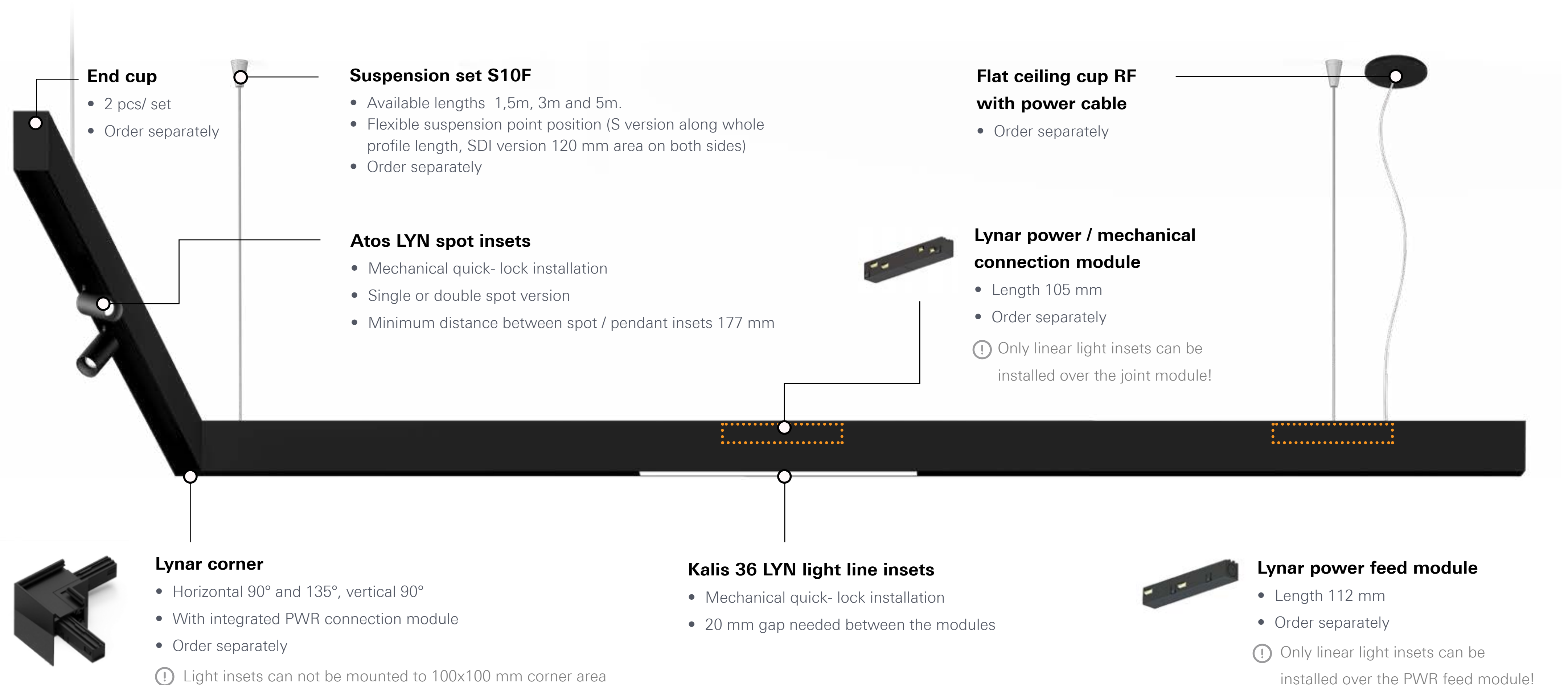


Keep on moving

Get the maximum flexibility of adjusting the light in the space. Not just the first time, but anytime. Repositioning the modules has never been easier.

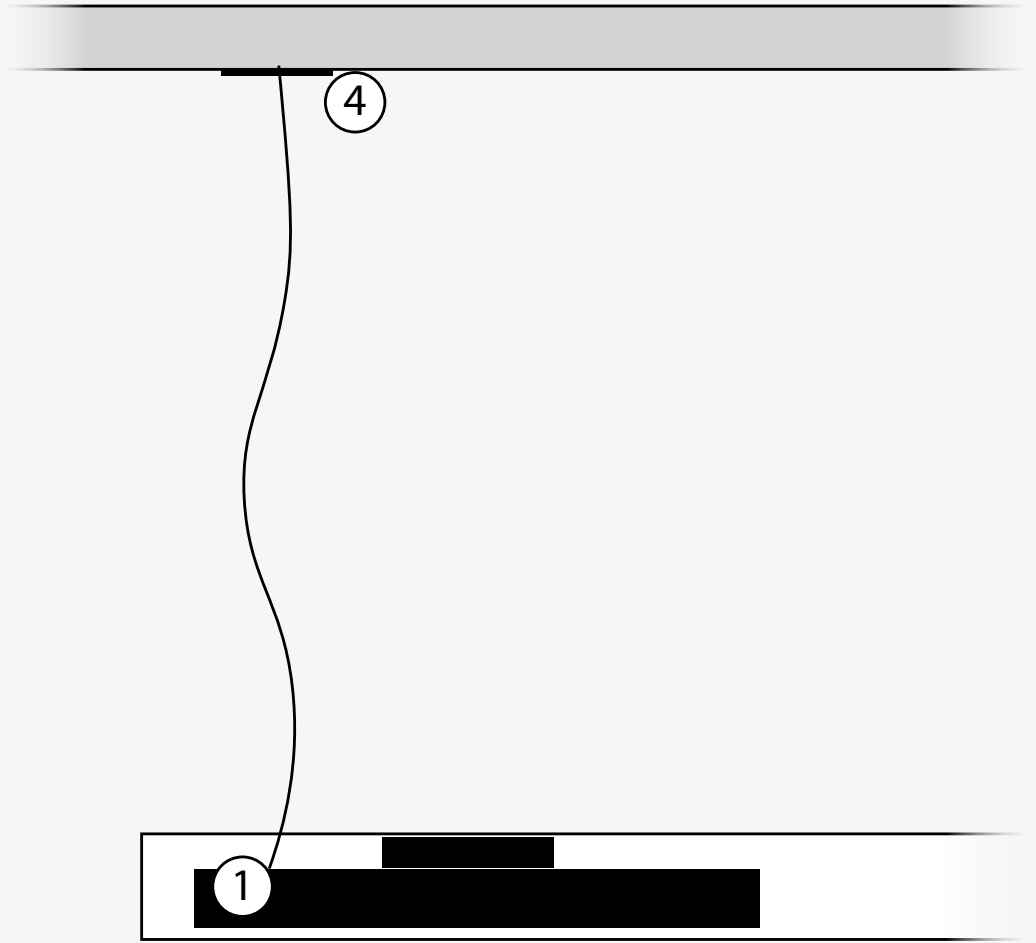
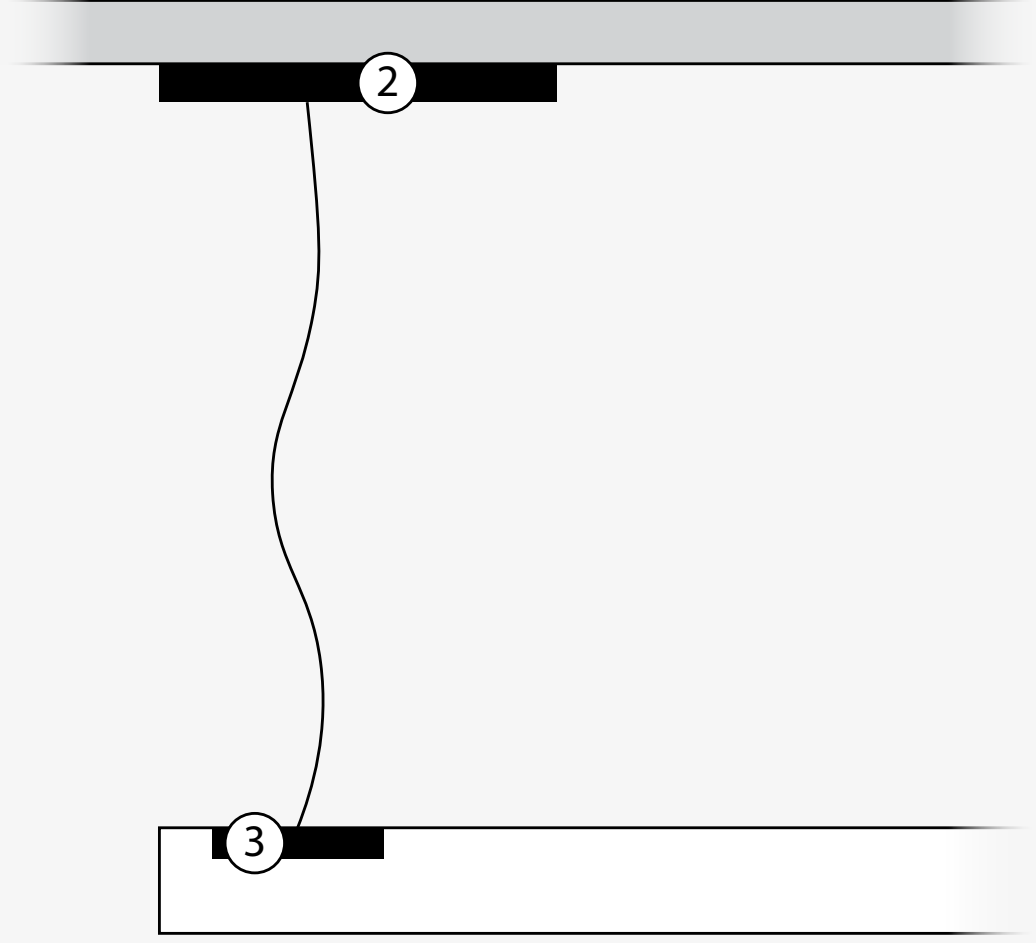
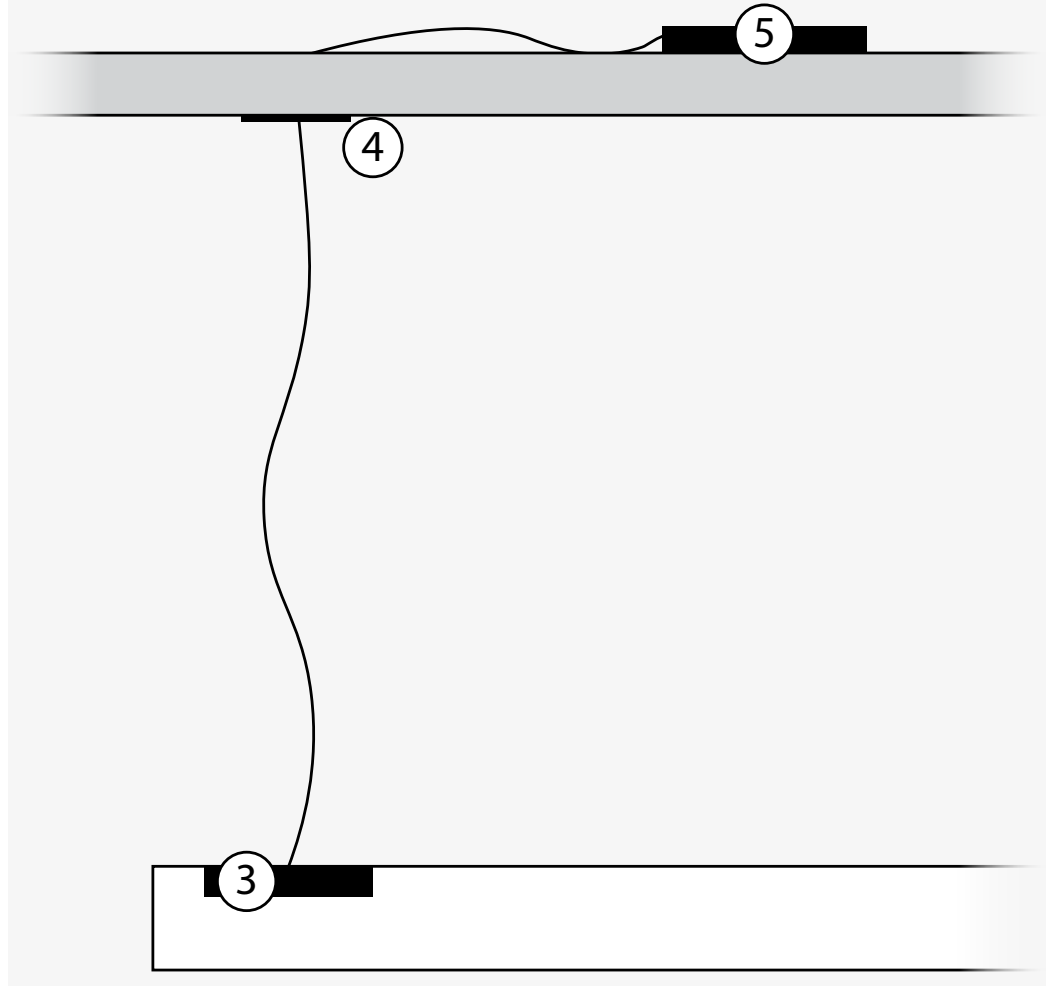


Accessories and order example



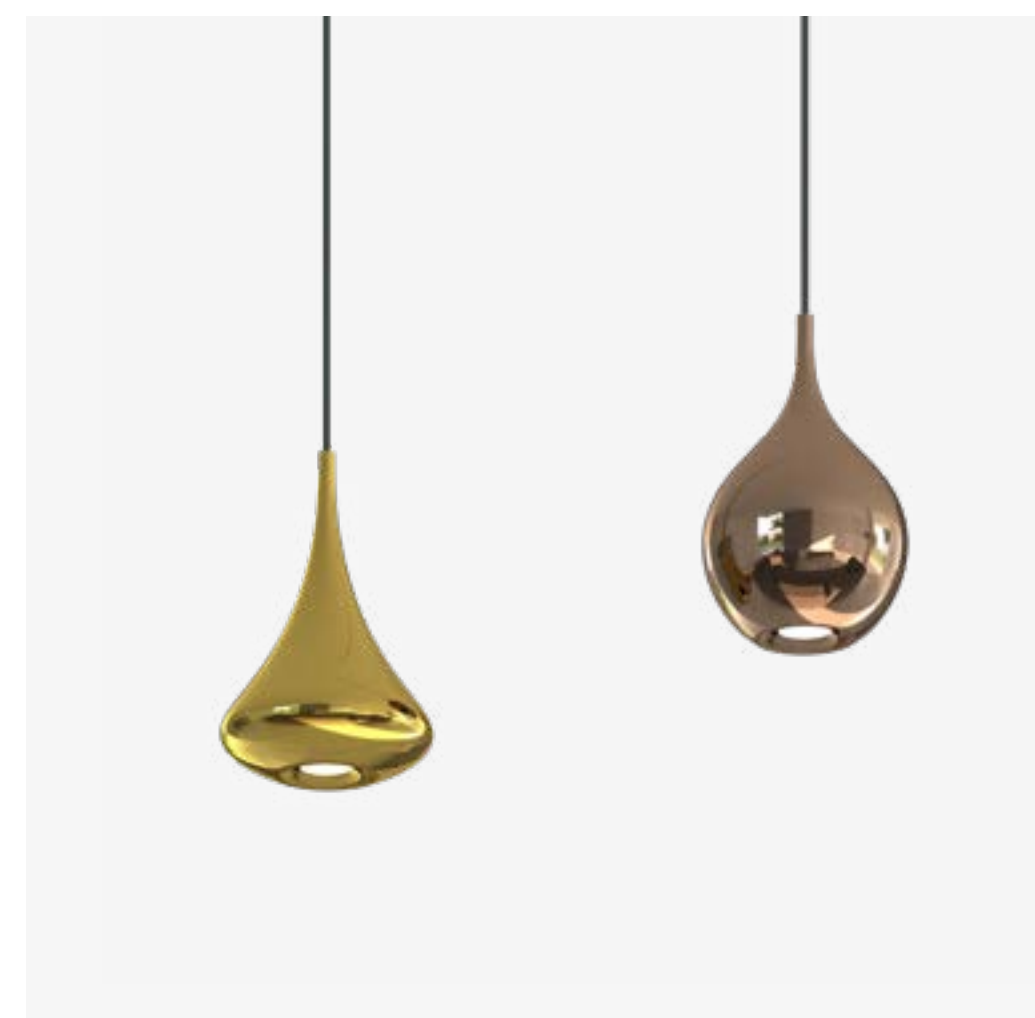
Power supply options

- ① Lynar PSI - Power supply internal (650 mm)
- ② Lynar PSE - Power supply external (650 mm)
- ③ Lynar power feed module
- ④ Flat ceiling cup RF with power cable
- ⑤ Lynar remote power supply

INTERNAL	EXTERNAL	
<div>Lynar PSI 48V internal power supply</div> <div></div> <div>70W, 150 W Profile inset installation (black) Ceiling cup RF order separately</div>	<div>Lynar PSE 48V external power supply</div> <div></div> <div>70W, 150 W, 250 W Ceiling installation (for Lynar S and SDI) Power cable included</div>	<div>Lynar remote 48V power supply</div> <div></div> <div>150 W, 250 W Remote suspended ceiling installation Ceiling cup RF order separately</div>



Sweet home
for light
modules



Elegant,
flexible and
multiuse

Light control

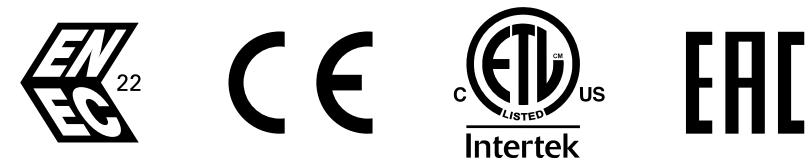
Wireless lighting control system Casambi offers a big variety of possibilities for a user to interact with the lighting. The app for smartphones and tablets is the most elaborated user interface. Besides the app, traditional wall switches, push buttons, Casambi's own scene controllers and many other control points can be used.



Made in Europe

Our products are carefully planned, manufactured and tested in order to ensure reliable operation throughout their life span, to limit the environmental impact as little as possible and to co-create pleasant living conditions. Quality is our highest priority and way of life.

High standards and reliable quality of our products were certified by numerous organisations.



7

Year warranty

100%

Tested products

ISO

Certified productions

 **intra lighting**